

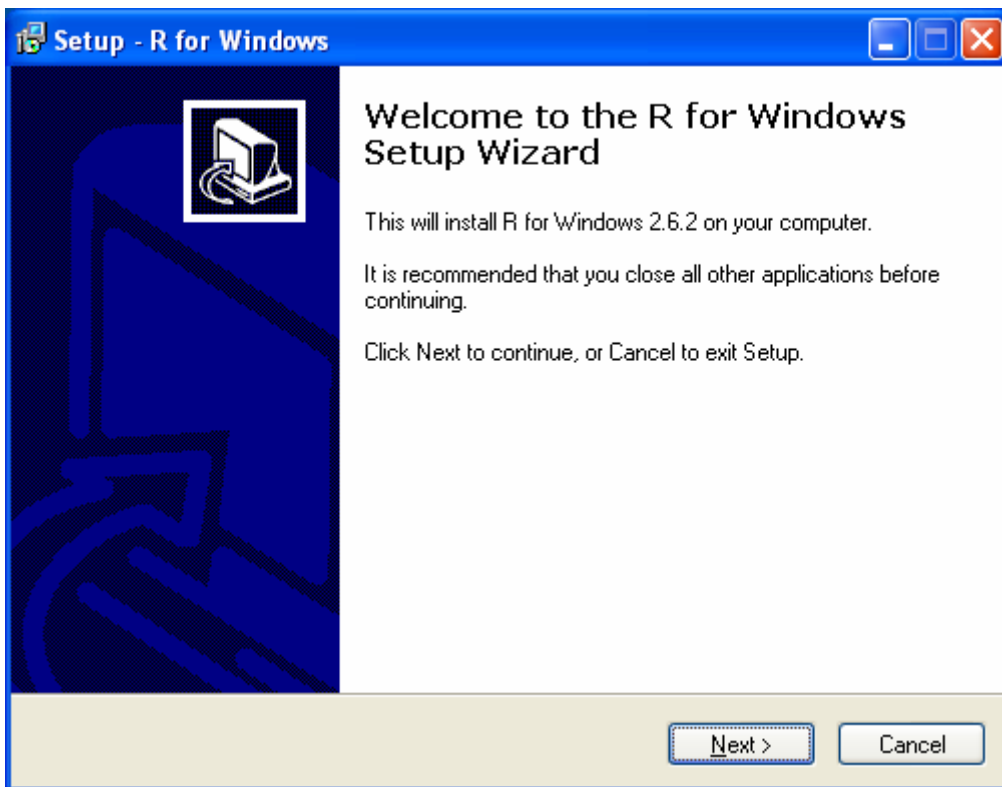
R Installation Guide - Windows

Go to R's website at <http://www.r-project.org/index.html>, on the side bar under **Download** click CRAN. Under **USA** choose an institute near you to take your image from.

Windows > base > R-2.6.6-win32.exe

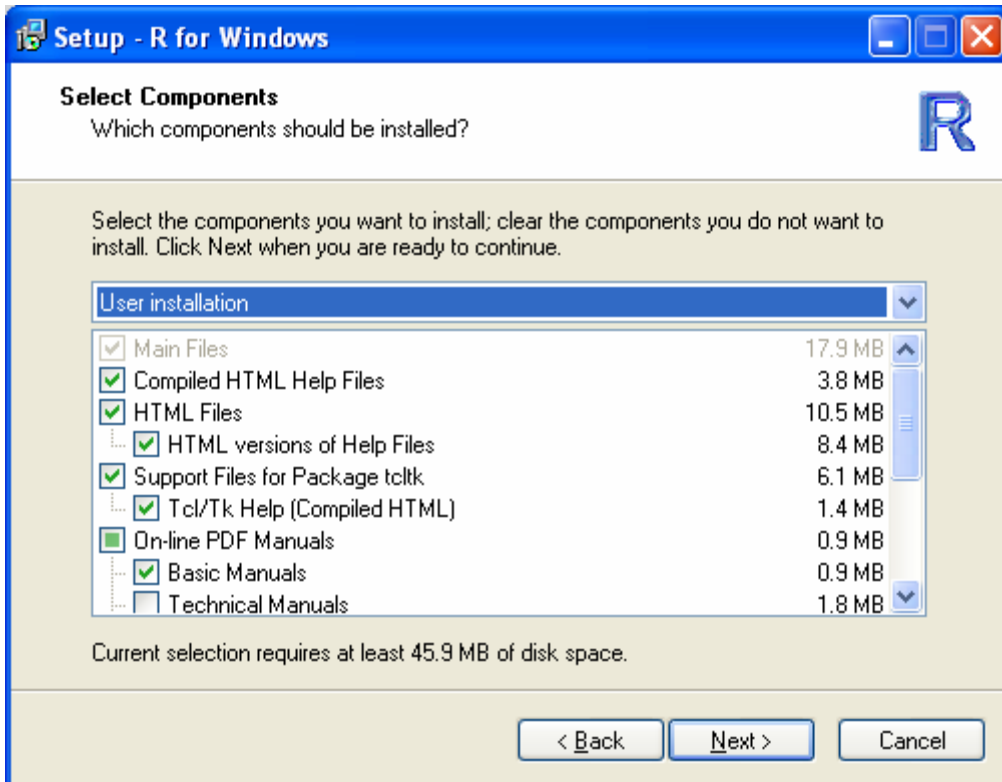
In the dialog window select **Save File** to download the file. Once it has done downloading open the file.

In the **Select Setup Language** window choose your preferred language, click **Ok**.



In the **Setup** window click **Next >** **Next >** Choose the folder you would like R to be installed (default is in the Program Files under R) click **Next**

Select what components you want to be installed by selecting from the drop down menu (default is **User installation**), click **Next**.



Choose your **Startup options** by clicking **Yes** to customize your settings or **No** to accept the default settings. **Next**

Select the folder in the Start Menu where you would like your R shortcuts to be (default is a folder named R). **Next**

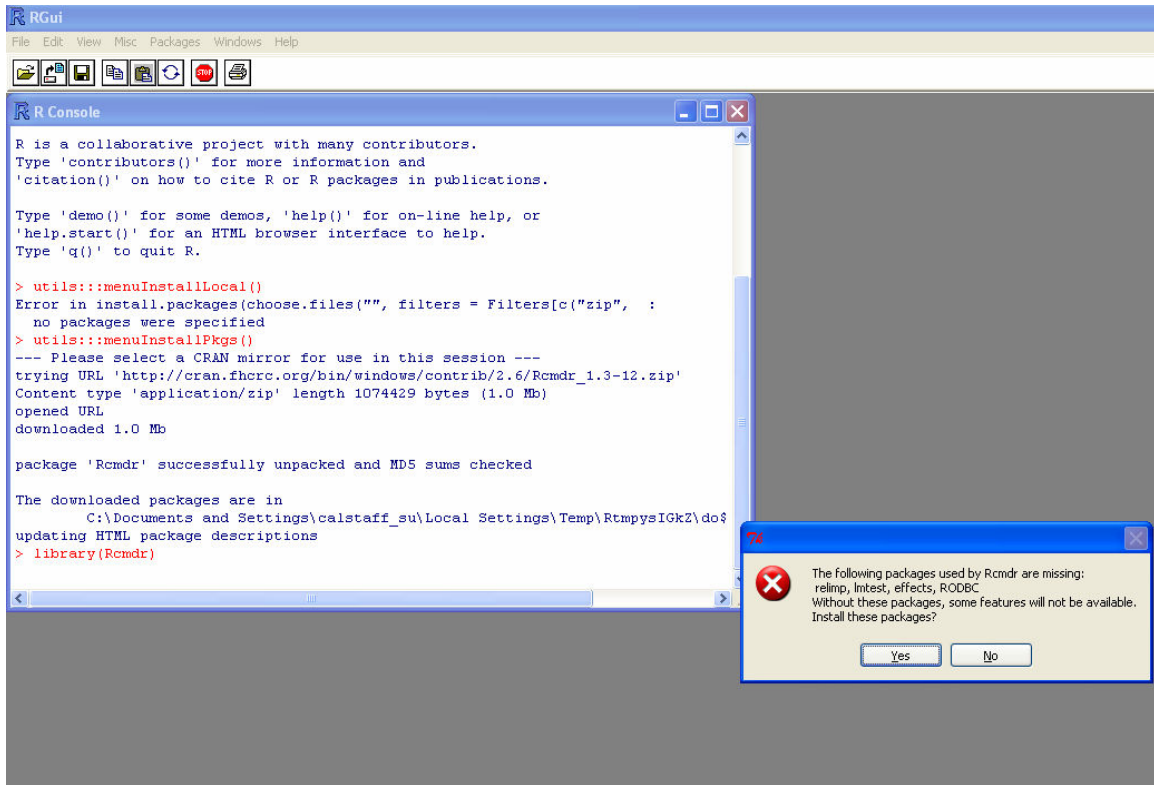
Select additional features you would like, click **Next**.

R will now begin installing, when it is done select **Finish**

To run R go to your **Start Menu > All Programs >** find the folder in which you saved your R shortcuts > **R 2.6.2** (or current edition)

Go to **Packages > Install Packages > USA** (your local area) > **Rcmdr**

When the Rcmdr package has been installed type in **library(Rcmdr)** an error message will pop up, click **Yes** to install the missing packages.



When the packages are done installing Rcmdr will be ready to use

And you are ready to rock your statistics.